

THE PATH TO THE ULTIMATE CREATOR FOR PIANO, by KEITH BARNARD.

APRIL - MAY, 2014. DURATION - about 47
minutes.

♩ = very slow indeed - ALWAYS legato, cantabile, expressive
free interpretation - DYNAMICS ARE APPROXIMATE.
⊙ = long PAUSE.

PIANO

Handwritten musical notation for the first system. The treble clef staff contains a series of notes, some with dots above them, and rests. The bass clef staff contains notes, some with dots below them, and rests. A circled 'p' is written in the left margin. The notation is highly stylized and expressive.

Keep pp bow for the whole of this page

Handwritten musical notation for the second system. It continues the piece with treble and bass clefs. The notation includes notes, rests, and a section with a dense cluster of notes in the bass clef. The style remains consistent with the first system.

(MP)

Keep the bow for the whole of the page

All naturals

(MP)

(P)

3

All naturals

Handwritten musical notation for the first system. The treble clef staff contains a sequence of notes: G4, A4, B4, C5, B4, A4, G4, F4, E4, D4. The bass clef staff contains chords: G2, B2, D3; G2, B2, D3; G2, B2, D3; G2, B2, D3; G2, B2, D3. A circled 'ped' marking is present below the bass staff. The word 'All naturals' is written above the treble staff.

Handwritten musical notation for the second system. The treble clef staff contains notes: G4, A4, B4, C5, B4, A4, G4, F4, E4, D4. The bass clef staff contains a series of notes: G2, A2, B2, C3, D3, E3, F3, G3, A3, B3, C4, D4. A circled 'ped' marking is present below the bass staff.

Handwritten musical notation for the third system. The treble clef staff contains notes: G4, A4, B4, C5, B4, A4, G4, F4, E4, D4. The bass clef staff contains notes: G2, A2, B2, C3, D3, E3, F3, G3, A3, B3, C4, D4. There are some accidentals and markings like 'm sb' and 'rivan' above the notes.

Handwritten musical notation for the fourth system. The treble clef staff contains notes: G4, A4, B4, C5, B4, A4, G4, F4, E4, D4. The bass clef staff contains notes: G2, A2, B2, C3, D3, E3, F3, G3, A3, B3, C4, D4. The word 'All naturals' is written above the treble staff.

Handwritten musical notation for the fifth system. The treble clef staff contains notes: G4, A4, B4, C5, B4, A4, G4, F4, E4, D4. The bass clef staff contains notes: G2, A2, B2, C3, D3, E3, F3, G3, A3, B3, C4, D4. A circled 'ped' marking is present below the bass staff.

Handwritten musical notation for the first system, featuring a treble and bass clef with various notes and accidentals.

~~Keep the room for the whole of this piece~~

Keep the room for the whole of this piece

Handwritten musical notation for the second system, including treble and bass clefs and a large bracketed section.

(All naturals)

Handwritten musical notation for the third system, showing a sequence of notes with natural signs and a dynamic marking of (mp).

(All naturals)

Handwritten musical notation for the fourth system, featuring a treble clef and a series of notes with natural signs.

5

mp

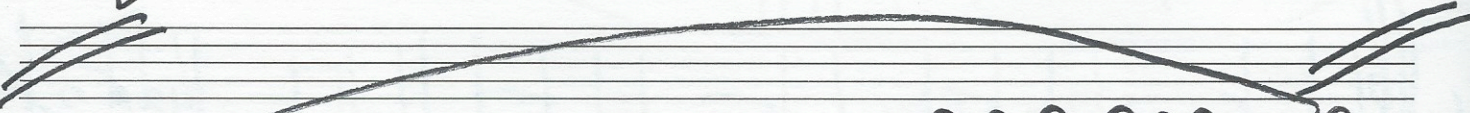
Keep leg down for the whole of this page

mp

p

p

~~Keep the bow for the whole of the piece~~



Handwritten musical notation for the first system. It consists of two staves. The upper staff contains a series of chords, with some notes circled. The lower staff contains a melodic line with notes and rests. Dynamic markings include *mf* and *mp*. There are some annotations above the notes, including a circled '3' and a circled '4'.

Keep ped down for the whole of this page

Handwritten musical notation for the second system. It consists of two staves with complex chordal textures and melodic lines. The upper staff has many notes, some with accidentals. The lower staff has a similar texture. Dynamic marking includes *mf*.

Alternative

Handwritten musical notation for the third system, labeled 'Alternative'. It consists of two staves with a more rhythmic and melodic approach. The upper staff has notes with stems pointing up, and the lower staff has notes with stems pointing down. Dynamic marking includes *mf*.

Handwritten musical notation for the fourth system. It consists of two staves with a complex melodic and harmonic structure. The upper staff has notes with stems pointing up, and the lower staff has notes with stems pointing down. Dynamic marking includes *mf*.

9

Handwritten musical notation for the first system. It consists of two staves. The upper staff is in treble clef with a key signature of one flat (B-flat). The melody begins with a quarter note G4, followed by quarter notes A4, B4, and C5, then a series of sixteenth notes: D5, E5, F5, G5, A5, B5, C6, D6, E6, F6, G6, A6, B6, C7. The lower staff starts with a bass clef and contains two quarter notes: G2 and A2. A fermata is placed over the final measure of the upper staff.

~~Rep~~

Keep rep only for the whole of this piece

Handwritten musical notation for the second system. It consists of two staves. The upper staff is in treble clef with a key signature of one flat. The melody consists of quarter notes: G4, A4, B4, C5, D5, E5, F5, G5, A5, B5, C6, D6, E6, F6, G6, A6, B6, C7. The lower staff contains a bass clef and a series of notes, some of which are circled and connected by lines, possibly indicating a specific performance technique or a sequence of chords.

Handwritten musical notation for the third system. It consists of two staves. The upper staff is in treble clef with a key signature of one flat. The melody consists of quarter notes: G4, A4, B4, C5, D5, E5, F5, G5, A5, B5, C6, D6, E6, F6, G6, A6, B6, C7. The lower staff contains a bass clef and a series of notes, some of which are circled and connected by lines.

Handwritten musical notation for the fourth system. It consists of two staves. The upper staff is in treble clef with a key signature of one flat. The melody consists of quarter notes: G4, A4, B4, C5, D5, E5, F5, G5, A5, B5, C6, D6, E6, F6, G6, A6, B6, C7. The lower staff contains a bass clef and a series of notes, some of which are circled and connected by lines.

All
Instruments

8va
Bass

(ALL NATURAL)

10 ~~11~~

8VA
8DB

~~mp~~

~~mp~~

~~mp~~

(ALL NATURAL)

8VA
8DB

~~mp~~

~~mp~~

~~mp~~

11

Handwritten musical notation for the first system. It consists of two staves. The upper staff contains several notes, some with stems pointing up and some with stems pointing down, interspersed with rests. The lower staff contains notes and rests, with some notes having stems pointing up. There are some markings that look like 'p' (piano) and 'f' (forte) in the first and fourth measures. The system ends with a double bar line.

Keep the rest for the whole of this page

Handwritten musical notation for the second system. It consists of two staves. The upper staff has notes with stems pointing up and down, and rests. The lower staff has notes with stems pointing up and down, and rests. There are some markings that look like 'p' (piano) and 'f' (forte) in the first and fourth measures. The system ends with a double bar line.

Handwritten musical notation for the third system. It consists of two staves. The upper staff has notes with stems pointing up and down, and rests. The lower staff has notes with stems pointing up and down, and rests. There are some markings that look like 'p' (piano) and 'f' (forte) in the first and fourth measures. The system ends with a double bar line.

Handwritten musical notation for the fourth system. It consists of two staves. The upper staff has notes with stems pointing up and down, and rests. The lower staff has notes with stems pointing up and down, and rests. There are some markings that look like 'p' (piano) and 'f' (forte) in the first and fourth measures. The system ends with a double bar line.

(ALL NATURAL)

12

Handwritten musical notation for the first system. It consists of two staves. The upper staff contains several notes with stems, some with accidentals (sharps and flats). The lower staff contains notes with stems and some accidentals. There are some scribbles and a circled '12' in the top right corner.

Keep her down for the whole of this page

Handwritten musical notation for the second system. It features two staves. The upper staff has notes with stems and accidentals. The lower staff has notes with stems and accidentals. There are some scribbles and a circled 'ALL NATURAL' in the upper right. The text 'Keep her down for the whole of this page' is written above the first four measures.

Handwritten musical notation for the third system. It features two staves. The upper staff has notes with stems and accidentals. The lower staff has notes with stems and accidentals. There are some scribbles and a circled 'ALL NATURAL' in the upper middle.

Handwritten musical notation for the fourth system. It features two staves. The upper staff has notes with stems and accidentals. The lower staff has notes with stems and accidentals. There are some scribbles and a circled '(MF)' in the lower left.

13

B's in the Bass are 1st time

Handwritten musical notation for the first system. The treble clef staff contains a melody with notes on the lines and spaces, including sharps and slurs. The bass clef staff contains accompaniment with chords and rests. A dynamic marking '(p)' is present in both staves.

~~Keep the down for the whole of this piece~~

Handwritten musical notation for the second system. The treble clef staff continues the melody with slurs and accidentals. The bass clef staff continues the accompaniment with chords and rests. A dynamic marking '(p)' is present in the bass staff.

Handwritten musical notation for the third system. The treble clef staff shows a continuation of the melody with slurs and accidentals. The bass clef staff shows accompaniment with chords and rests. A dynamic marking '(p)' is present in the bass staff.

Handwritten musical notation for the fourth system. The treble clef staff concludes the melody with slurs and accidentals. The bass clef staff concludes the accompaniment with chords and rests. A dynamic marking '(p)' is present in the bass staff.

ALL NATURALS

14

Handwritten musical notation on a grand staff. The left hand part includes a treble clef, a key signature of one sharp (F#), and a time signature of 3/4. It features a series of chords, some marked with 'mf' and 'p'. The right hand part consists of a single melodic line with a series of eighth notes, some with accidentals (sharps and naturals). A circled 'p' is written below the first few notes of the right hand.

Handwritten musical notation on a grand staff. The left hand part features a series of chords, some marked with 'p'. The right hand part consists of a melodic line with a series of eighth notes, some with accidentals. A circled 'p' is written below the first few notes of the right hand.

Handwritten musical notation on a grand staff. The left hand part features a series of chords, some marked with 'p'. The right hand part consists of a melodic line with a series of eighth notes, some with accidentals. A circled 'p' is written below the first few notes of the right hand.

Handwritten musical notation on a grand staff. The left hand part features a series of chords, some marked with 'p'. The right hand part consists of a melodic line with a series of eighth notes, some with accidentals. A circled 'p' is written below the first few notes of the right hand.

Handwritten musical notation on a grand staff. The left hand part features a series of chords, some marked with 'p'. The right hand part consists of a melodic line with a series of eighth notes, some with accidentals. A circled 'p' is written below the first few notes of the right hand.

Handwritten musical notation on a grand staff. The left hand part features a series of chords, some marked with 'p'. The right hand part consists of a melodic line with a series of eighth notes, some with accidentals. A circled 'p' is written below the first few notes of the right hand. The text 'All accidentals' is circled in the right margin.

15 trichets

MMS

All naturals

ped keep ped down for the rest of this page

All naturals

(MP)

~~Key too dark to hear~~

All naturals SVA
BASS (p)

SVA
BASS (MP)

(MP)

(MP)

(MF)